

Advantages of the wooden Sleeper

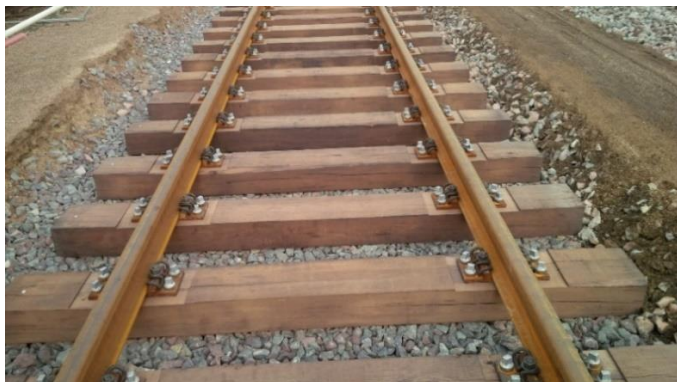
Wood as raw material

- Natural, renewable material (beech, oak, pine)
- Climate friendly due to CO₂-neutrality
- Origin in sustainably operated European forests - therefore, protection of threatened tropic forests
- Very long service life due to professional vacuum pressure impregnation
- Use of protective agents with significantly improved environmental characteristics (less exudation and less odor generation) - e.g. W.E.I. type C



Application areas

- In normal rail track systems
- In railway station areas
- In switching operations
- In train assembly systems
- For harbor and industrial trains, etc.
- For special application areas such as for tight curve radii, on bridges, in tunnels, on mountain routes, etc.
- For switches
- Subways and S-Trains
- For high axle loads



Wood and technology

- Low weight/easy handling
- Lowered requirements for the height of the ballast bed
- High elasticity in the rail due to very good transverse offset resistance
- No conductivity in comparison to other materials
- Resistance against breaking loads in case of derailments (e.g. switching operation)
- Outstanding noise and tremor damping characteristics
- Mature, safe and durable technology
- Development potential for improvements is available



Disposal

- Reuse in lower ranking rail tracks is possible
- Environmentally compatible disposal of the old sleepers through CO₂-neutral energetic use (heat and electricity generation)



Costs

- Improved overall costs due to favorable secondary materials use and commercialization
- Cost effective compared to many alternative solutions
- Low costs for maintenance works and possible exchanges
- Low transport costs due to lower weight

Publisher:

Studiengesellschaft Holzschwellenoberbau e.V.

Saarlandstr. 208

D-55411 Bingen

Phone +49 (0) 6721 96810, Fax *49 (0) 6721 968133

Email info@holzschwellenoberbau.de

Internet www.holzschwellenoberbau.de

Key words:

Wood as raw material, application areas, wood sleeper and technology, disposal, costs